

# WRV Long Range Radios

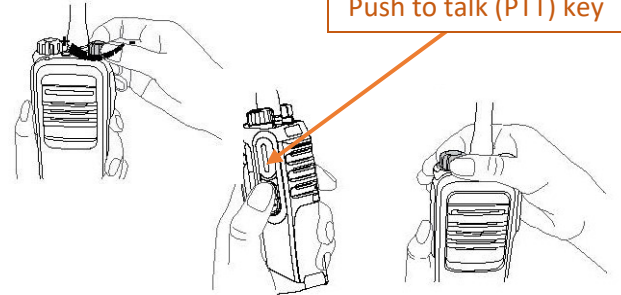
WRV has a limited supply of long-range radios. They are higher powered than our smaller two-way radios and require a licensed FCC frequency to operate. They are ideal for projects in which we are spread out over many miles. While these radios are waterproof and shock resistant, they do cost six times as much to replace, so please take care of them.

## Basic Operation

Turning the Radio On/Off



Adjusting the Volume



Selecting a Zone

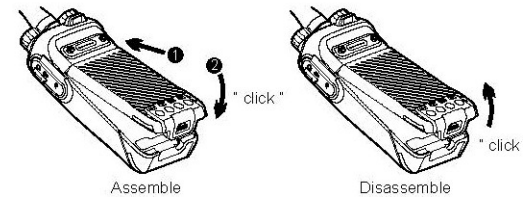
Selecting a Channel

**Zone (1) toggle key below PTT key) & Channel (3) dial on top left**

**To talk** to another radio push and hold orange PTT key and hold two inches from your face.

**Battery** Under normal conditions the Li-ion rechargeable batteries should last a couple of days. In colder weather they may stop performing at a lower charge level. Keep spare batteries warm in a pocket, and if camping store radio in your tent overnight.

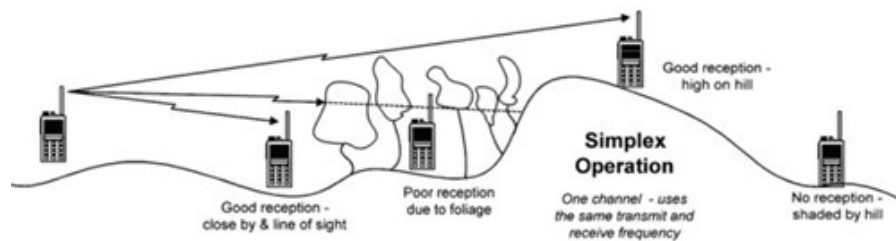
To attach the battery, do as follows.



Assemble

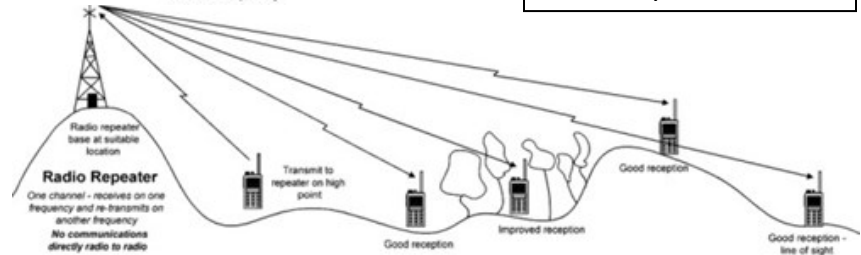
Disassemble

## Advanced Operation



On most projects we will use simplex operation where the radios talk directly with each other. But can be limited by terrain.

On projects with terrain limitations, we may set up a strategically placed repeater for the radios to talk through. In this situation use **Channel 1**.



## Truck Radios.

Some WRV trucks have compatible radios installed. Use the same Channel and Zone settings.